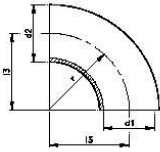


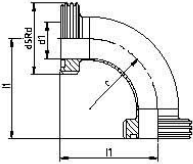


>> ACCESSORIES SMS



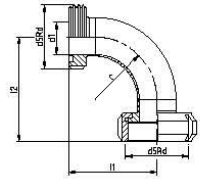
WELDING BEND 90° SMS

FIG.22600



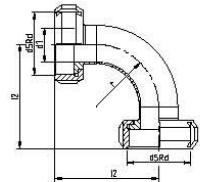
BEND 90° M/M SMS

FIG.22611



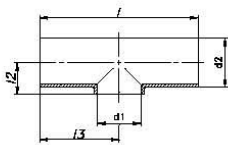
BEND 90° M/N SMS

FIG.22613



BEND 90° N/N SMS

FIG.22633



SHORT WELDING TEE SMS

FIG.3600



>> ACCESSORIES SMS

WELDING BEND 90° SMS

DN	d1	d2	I3	r	AISI 304	AISI 316L
25	22,9	25,4	38,1	38,1	22600025	222600025
38	35,6	38,1	57,2	57,2	22600038	222600038
51	48,3	50,8	76,2	76,2	22600051	222600051
63,5	60,5	63,5	95,2	95,2	22600063	222600063
76	73	76,2	114,3	114,3	22600076	222600076
104	100	104	150	150	22600104	222600104

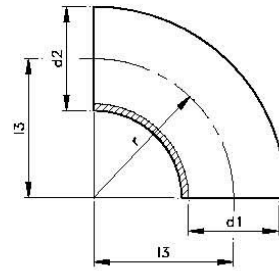


Fig.22600

**CODO 90° M/M SMS
BEND 90° M/M SMS
COUDE 90° M/M SMS**

DN	d1	d5Rd	I1	r	AISI 304	AISI 316L
25	22,9	40x1/6"	57,1	38,1	22611025	222611025
38	35,6	60x1/6"	80,2	57,2	22611038	222611038
51	48,3	70x1/6"	99,2	76,2	22611051	222611051
63,5	60,5	85x1/6"	122,2	95,2	22611063	222611063
76	73	98x1/6"	141,3	114,3	22611076	222611076
104	100	125x1/4"	180	150	22611104	222611104

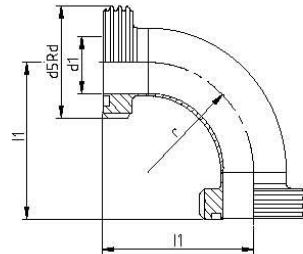


Fig.22611

- **Consultar disponibilidad.**
- **To consult availability.**
- **Consulter disponibilitéé.**

**CODO 90° M/T SMS
BEND 90° M/N SMS
COUDE 90° F/E SMS**

DN	d1	d5Rd	I1	I2	r	AISI 304	AISI 316L
25	22,9	40x1/6"	57,1	57,1	38,1	22613025	222613025
38	35,6	60x1/6"	80,2	77,2	57,2	22613038	222613038
51	48,3	70x1/6"	99,2	96,2	76,2	22613051	222613051
63,5	60,5	85x1/6"	122,2	119,2	95,2	22613063	222613063
76	73	98x1/6"	141,3	138,3	114,3	22613076	222613076
104	100	125x1/4"	180	180	150	22613104	222613104

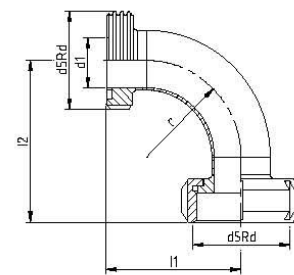


Fig.22613

- **To consult availability.**



>> ACCESSORIES SMS

BEND 90° N/N SMS

DN	d1	d5Rd	I2	r	AISI 304	AISI 316L
25	22,9	40x1/6"	57,1	38,1	22633025	222633025
38	35,6	60x1/6"	77,2	57,2	22633038	222633038
51	48,3	70x1/6"	96,2	76,2	22633051	222633051
63,5	60,5	85x1/6"	119,2	95,2	22633063	222633063
76	73	98x1/6"	138,3	114,3	22633076	222633076
104	100	125x1/4"	180	150	22633104	222633104

- To consult availability.

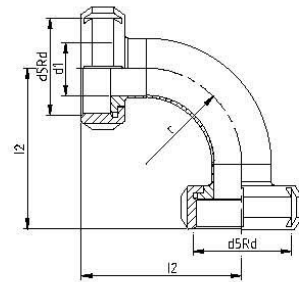


Fig.22633

SHORT WELDING TEE SMS

DN	d1	d2	I2	I3	I	AISI 304	AISI 316L
25	22,5	25	15	55	110	3600025/1	23600025/1
38	35,5	38	21	70	140	3600038/1	23600038/1
51	48,5	51	29	82	164	3600051/1	23600051/1
63,5	60,5	63,5	36,2	105	210	3600063/1	23600063/1
76	72,9	76,1	44	110	220	3600076/1	23600076/1
104	100	104	58	150	300	3600104/1	23600104/1

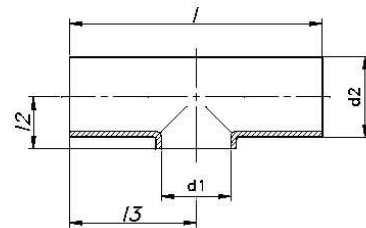


Fig.3600